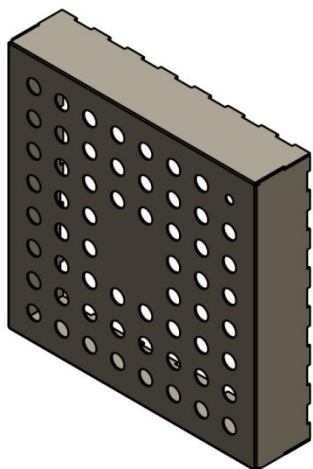


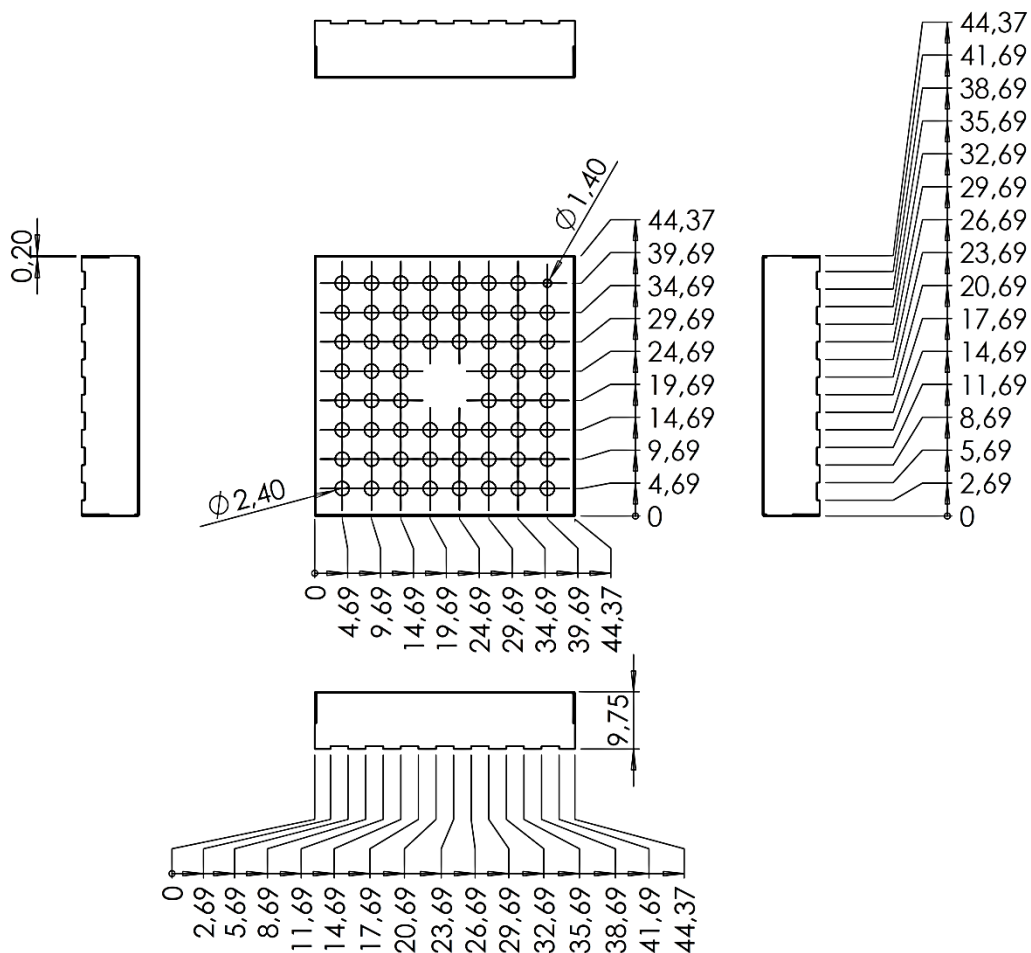
ONE-PIECE SHIELDS

SGH-44,37x44,37x9,75x0,20-FS-OP

3D VIEW

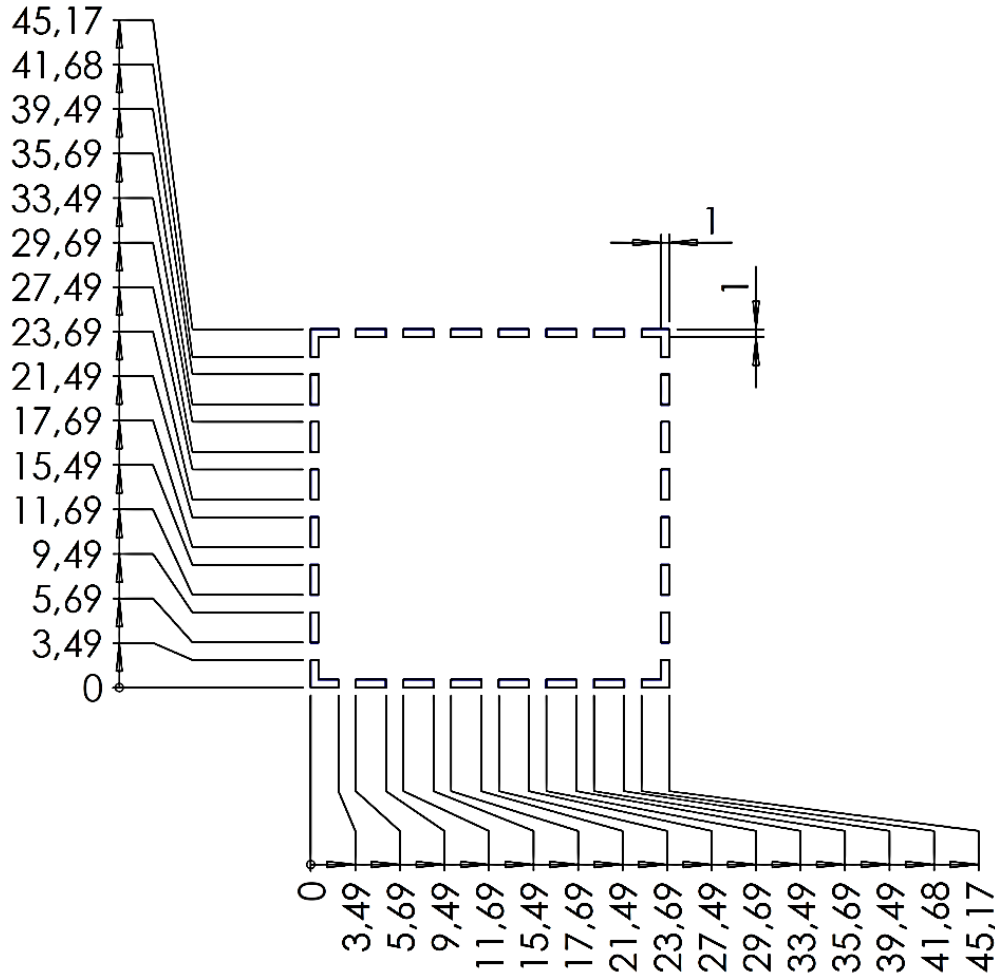


DIMENSIONS (mm)



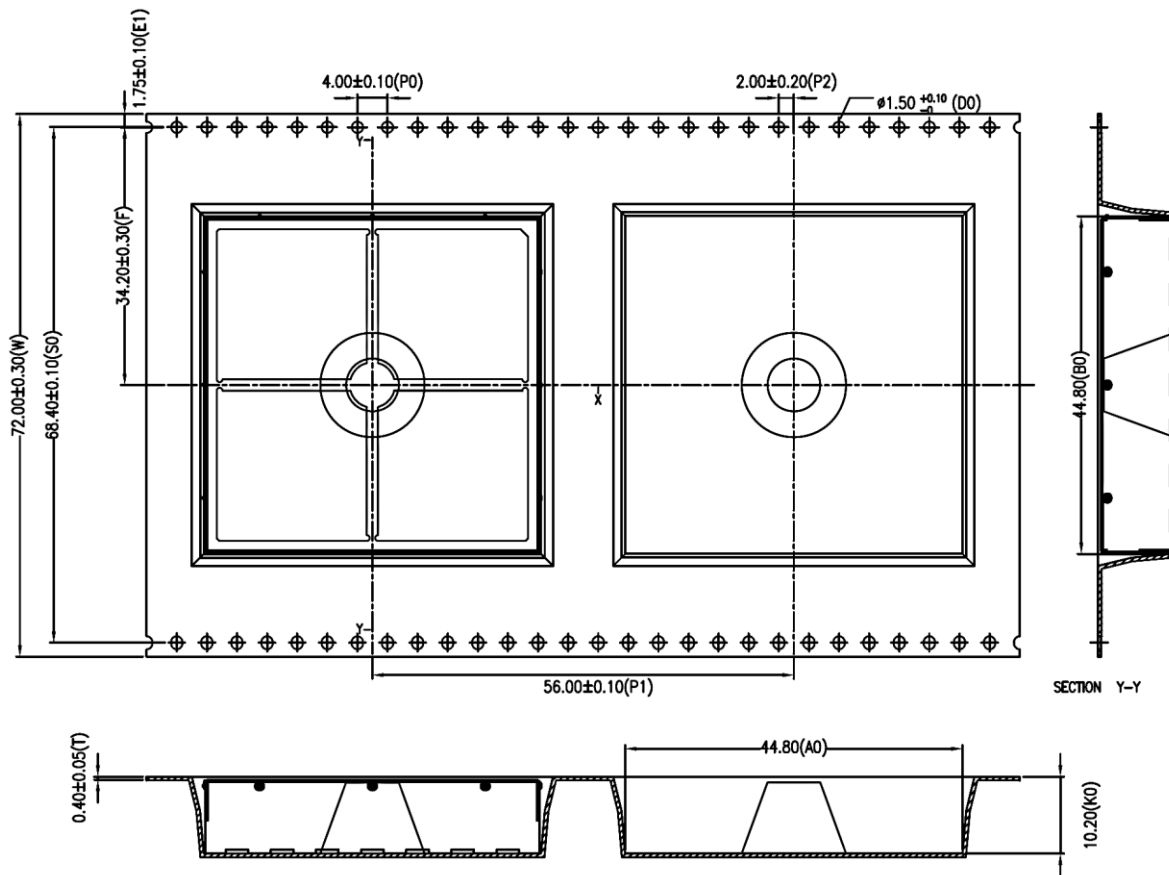
Property	Value	Tolerance
Thickness	0,20 mm	ISO 2768-mK
Length	44,37 mm	ISO 2768-mK
Width	44,37 mm	ISO 2768-mK
Height	9,75 mm	ISO 2768-mK
Material	SPTE	
Plating	Tin-plated	

RECOMMENDED FOOTPRINT (mm)



Disclaimer: This is only a recommendation based on information available to **mtc** at the time of printing. Actual land pattern can be significantly different due to various materials and processes used in PCB assembly. **mtc** makes no representation or warranty of performance based on the recommended land pattern.

PACKING SPECIFICATION – TAPE AND REEL (mm)



- Part conforms to EIA-481-D standards.
- Material: conductive polystyrene
- Packing length for 22" reel: 23,0 meters (1:4).
- Component packing to 13" reel: 80 pcs.
- Dimension tolerances:
 - .X \pm 0,20
 - .XX \pm 0,10

	A ₀	B ₀	K ₀
	44,80	44,80	10,20
Tolerance	$\pm 0,10$	$\pm 0,10$	$\pm 0,10$