

M1189A-G40L-4

IR Acousto-Optic Modulator

(PRELIMINARY)



0311

Small water cooled Germanium AO modulator ideal for compact IR laser applications.

SPECIFICATIONS

A/R Spectral Range:	9.3 μ m or 10.6 μ m (specified)
Interaction Medium:	Single Crystal Germanium
Optical path length:	15mm
Acoustic Velocity:	5.5mm/ μ s
Centre Frequency (fc):	40MHz
RF Bandwidth (Δ f):	10MHz
Input Impedance:	50 Ω
Input VSWR:	< 1.7:1 at 40MHz
Optical Insertion Loss:	< 3.5%
Reflectivity:	< 0.5%/Surface
Laser Polarization:	Linear Horizontal, Parallel to Base
Active Aperture:	4 mmH x 10 mmL (alternatives available)
Water Cooling (minimum):	1litre/minute at < 20°C
Outline Dimensions:	(See reverse)

TYPICAL PERFORMANCE

<u>Input beam diameter:</u>	<u>3mm</u>	
Optical access time:	0.35 μ s	
Diffraction Efficiency:	> 70% for 70W (9.23 μ m)	
Optical Power:	200 Watts *	
<u>Wavelength:</u>	<u>9.25μm</u>	<u>10.6μm</u>
Bragg Angle (mrad):	33.6	36.4
Separation Angle (mrad):	67.3	72.7

* For higher powers please contact Isomet

ALL SPECIFICATIONS SUBJECT TO CHANGE WITHOUT NOTICE

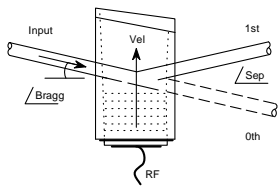
ISOMET CORP, 5263 Port Royal Rd, Springfield, VA 22151, USA.

Tel: (703) 321 8301 Fax: (703) 321 8546

E-mail: ISOMET@ISOMET.COM Web Page: WWW.ISOMET.COM

Quality Assured.

In-house: Crystal Growth,
Optical Polishing,
A/R coating, Vacuum Bonding



M1189A-G40L-4

IR Acousto-Optic Modulator

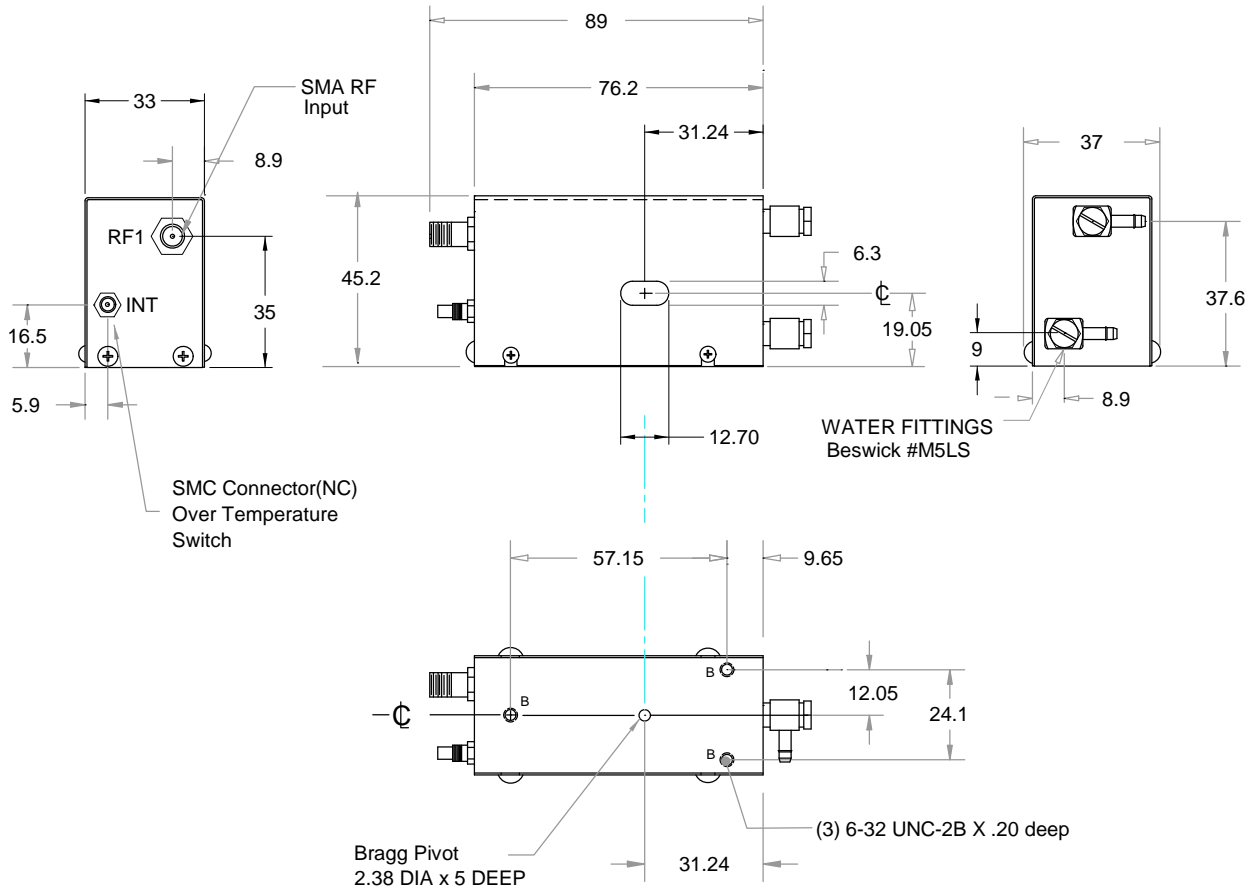
(PRELIMINARY)



0311

OUTLINE DRAWING

Dimn: inches



Add -M for metric mounting threads

Due to RF drive power dissipation, the M1189 requires water-cooling to prevent thermal runaway. (>1L/min at < 20degC). The integral NC thermal interlock switch opens at 32 degC.

The water cooled case parts are aluminium. It is strongly recommended that a corrosion inhibitor is added to the cooling system.

DRIVERS

Modulator Driver/Amplifier

RFA241

ALL SPECIFICATIONS SUBJECT TO CHANGE WITHOUT NOTICE

ISOMET CORP, 5263 Port Royal Rd, Springfield, VA 22151, USA.

Tel: (703) 321 8301 Fax: (703) 321 8546

E-mail: ISOMET@ISOMET.COM Web Page: WWW.ISOMET.COM

Quality Assured.

**In-house: Crystal Growth,
Optical Polishing,
A/R coating, Vacuum Bonding**