

Current Sense Transformers

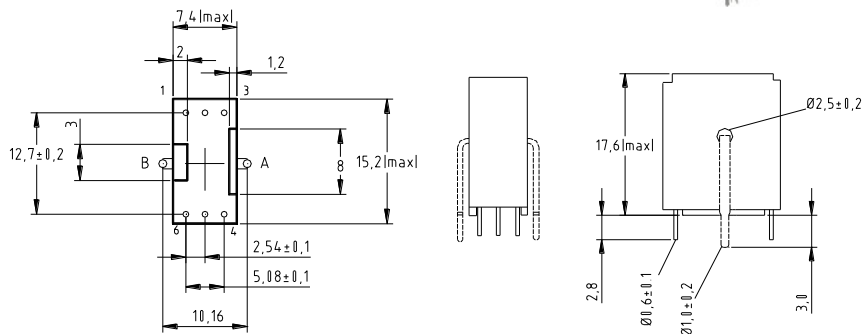
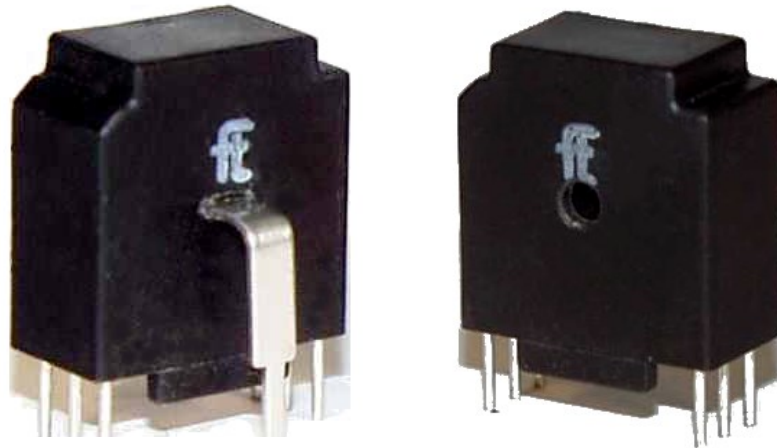
Series 3000

General applications

- Overload Limits
- Feedback control
- AC regulation
- Motor regulation

Features

- 4.2 kV RMS HI-POT primary to secondary
- Frequency range up to 200 kHz
- Maximum primary current 20 A
- Encapsulated construction
- IEC 950
- UL approved materials
- Operating temperature -30 °C to 130 °C
- Single operation placement with built-in primary
- Stick packaging
- Suitable for automated placement



Dimensions in mm, Tolerance unless otherwise stated: ± 0.5 mm

Part Number	Pins Mounted	Schematic Figure	Primary-Secondary Turns Ratio	Secondary min. inductance at 1V & 10kHz [mH]	Primary Max. Resistance per wire [Ohm]	Secondary Max. resistance [Ohm]	Secondary Rated Termination Resistance [Ohm]	Primary Rating, Unipolar [A _{ps}]	Primary Rating, Bipolar [A _{ps}]	Primary Peak Sense Current [A]
28003001	2 & 5		: 50	5	-	0,75	50	75	150	20
28003002	Center Hole		: 100	20	-	1,40	100	150	300	20
28003003	Diameter		: 200	80	-	4,50	200	300	600	20
28003004	2.5 ± 0.2		: 300	180	-	11,0	300	450	900	20
28003011	1 & 3 & 5		: 50	5	-	0,75	50	75	150	20
28003012	Center Hole		: 100	20	-	1,40	100	150	300	20
28003013	Diameter		: 200	80	-	4,50	200	300	600	20
28003014	2.5 ± 0.2		: 300	180	-	11,0	300	450	900	20
28003016	1 & 2 & 3 & 5		: 50 CT	5	-	0,75	50	75	150	20
28003017	Center Hole		: 100 CT	20	-	1,40	100	150	300	20
28003018	Diameter		: 200 CT	80	-	4,50	200	300	600	20
28003019	2.5 ± 0.2		: 300 CT	180	-	11,0	300	450	900	20
28003101	2 & 5		1 : 50	5	0,005	0,75	50	75	150	20
28003103	Primary		1 : 100	20	0,005	1,40	100	150	300	20
28003105	Integrated		1 : 200	80	0,005	4,50	200	300	600	20
28003107			1 : 300	180	0,005	11,0	300	450	900	20
28003102	1 & 2 & 3 & 5		1 : 50 CT	5	0,005	0,75	50	75	150	20
28003104	Primary		1 : 100 CT	20	0,005	1,40	100	150	300	20
28003106	Integrated		1 : 200 CT	80	0,005	4,50	200	300	600	20
28003108			1 : 300 CT	180	0,005	11,0	300	450	900	20
28003121	1 & 3 & 4 & 6		1 : 50 : 50	5	0,005	1,20	50	75	150	20
28003122	Primary		1 : 100 : 100	20	0,005	2,90	100	150	300	20
28003123	Integrated		1 : 150 : 150	45	0,005	6,00	150	225	450	20

CT = Center tap
100 CT = 50+50 Turns

Specification measured at 25 °C
Subject to change without notice