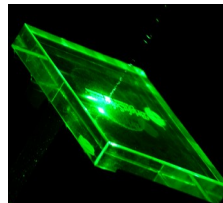
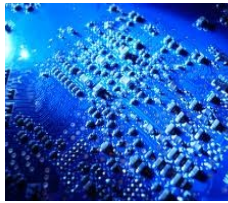
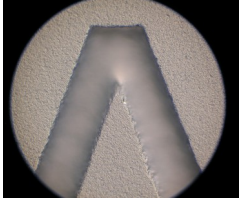


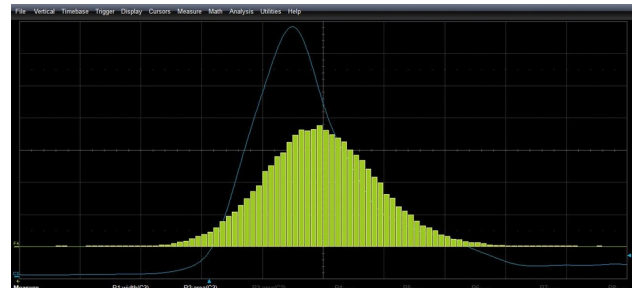
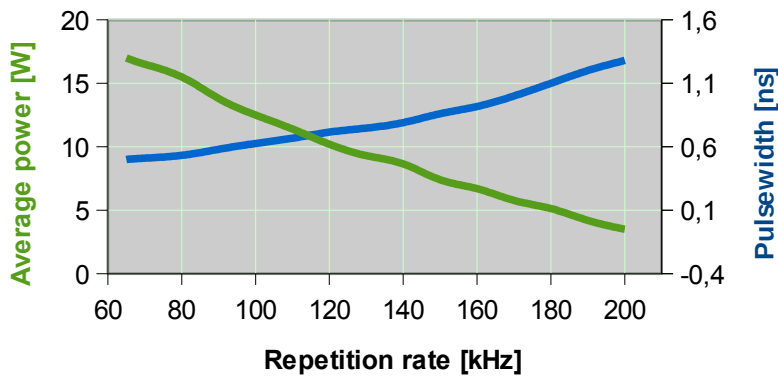
Vento

sub-ns MOPA DPSS Laser



- _500 ps
- _up to 25W @532nm
- _up to 60W @1064nm
- _50 to 200 kHz
- _active Q-Switch
- _low pulse jitter
- _compact single unit design

Vento 532nm - 15W



Options Available:

- Beam Expanding and Collimating optics
- Circular Polarization (standard for material processing)
- Red aiming beam
- AC-DC power supply

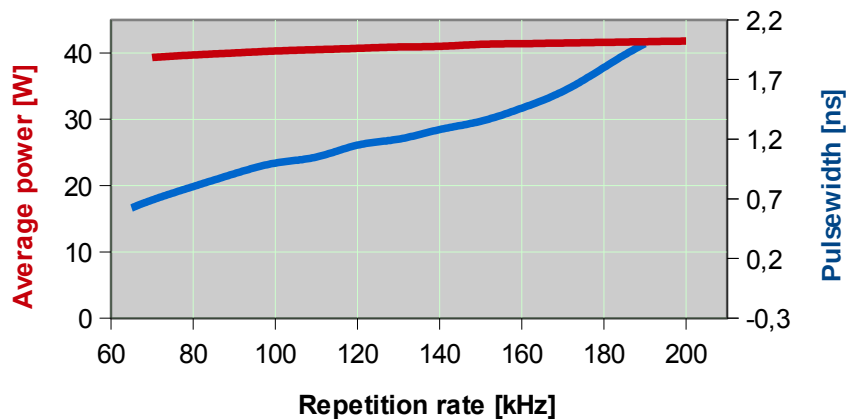
Applications:

- Ablation / Micromachining
- High-speed material processing
- Glass cutting
- LIDAR - LIBS
- 3rd to 4th harmonic generation

Technical Specifications

	Vento 532		Vento 1064		
Available models	15W	25W (Preliminary)	40W	60W (Preliminary)	
Primary Output Wavelength	532		1064		nm
Max average power	> 15	> 25	> 40	> 60	W
Q-Switch Repetition Rate	60 to 200 kHz				kHz
Pulse Energy	up to 250	up to 400	up to 500	up to 750	uJ
Pulsewidth	down to 500		down to 600		ps
Pulse Energy Stability	< 3.5% @ 60kHz		< 2% @ 60kHz		RMS
Polarization	Linear (100 : 1)				
M ²	< 2				
Beam diameter (1/e ²)	< 2				mm
Operating Temperature	10 - 40				°C
Cooling	Water cooled				
Control Connector	DB 25 pin				
DC Power supply input	24				V
Overall dimensions	30 x 22 x 10				cm ³
Weight	< 15				kg

Vento 1064nm - 40W



All information included in this document is subject to change without notice.

Updated data sheets can be provided on request.

For further details, please contact your local **Bright Solutions** sales representative or visit our website at www.brightsolutions.it

Bright Solutions Srl

Via Artigiani, 27
27010 Cura Carpignano -PV
Italy

Ph. +39 0382583091

Fax. +39 0382583690

e-mail: sales@brightsolutions.it