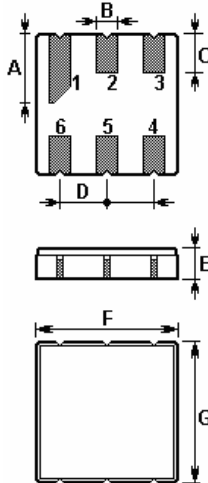


PART NO.: ACTF4046-433.92-DCC6

The **ACTF4046** is a low-loss, compact, and economical surface-acoustic-wave (**SAW**) RF filter in a surface-mount ceramic **DCC6** case for remote control receivers.

1. Package Dimension (DCC6)



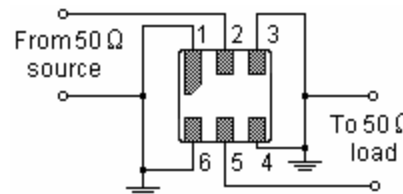
Pin	Configuration
2	Input
5	Output
1, 3, 4, 6	Ground

Sign	Data (unit: mm)	Sign	Data (unit: mm)
A	1.90±0.1	E	1.35±0.15
B	0.64±0.1 (x6)	F	3.80±0.15
C	1.00±0.1 (x5)	G	3.80±0.15
D	1.27±0.1 (x4)		

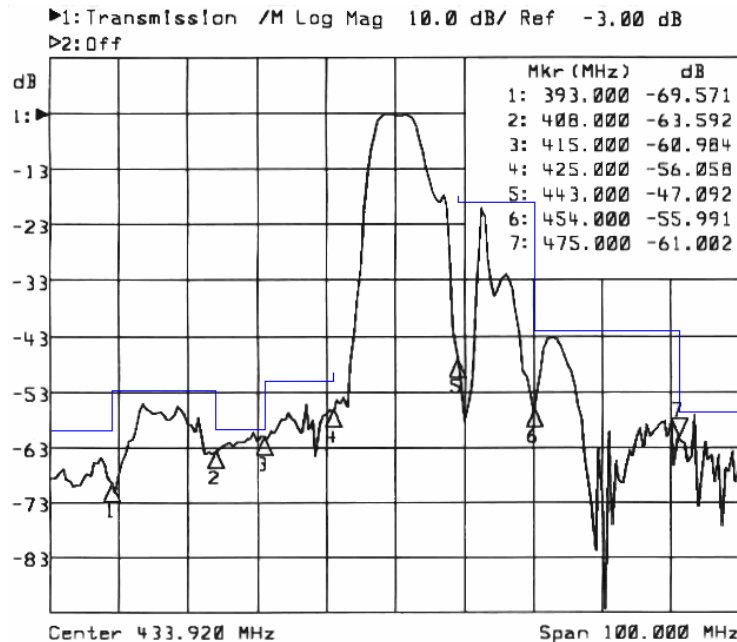
2. Marking

Laser Printing

3. Matching Circuit



4. Typical Frequency Response



In line with our ongoing policy of product evolution and improvement, the above specification may subject to change without notice

ISO9001:2000 Registered

For quotations or further information please contact us at:

3 The Business Centre, Molly Millars Lane, Wokingham, Berkshire, RG41 2EY, UK

<http://www.actcrystals.com>

5. Performance

5-1. Maximum Ratings

Rating		Value	Unit
Source Power	P_S	10	dBm
DC Voltage	V_{DC}	0	V
Operable Temperature Range	T_A	-40 to +85	°C
Storage Temperature Range	T_{stg}	-45 to +90	°C

5-2. Electronic Characteristics

Operating Temperature Range: $T = -40^{\circ}\text{C}$ to 85°C

Terminating Impedance: $Z_S = 50\Omega$, $Z_L = 50\Omega$

Characteristic		Min.	Typ.	Max.	Unit
Center Frequency	f_C		433.920		MHz
Insertion Loss	IL				
433.00 434.71 MHz		--	2.8	4.0	dB
Amplitude Ripple (p-p)	$\Delta\alpha$				
433.00 434.71 MHz		--	0.3	1.0	dB
Relative Attenuation (relative to IL)	α_{rel}				
10.00 350.00 MHz		60	65	--	dB
350.00 393.00 MHz		52	57	--	dB
393.00 408.00 MHz		45	50	--	dB
408.00 415.00 MHz		52	57	--	dB
415.00 425.50 MHz		40	48	--	dB
443.50 454.00 MHz		12	16	--	dB
454.00 475.00 MHz		34	39	--	dB
475.00 650.00 MHz		48	53	--	dB
650.00 1000.0 MHz		45	49	--	dB
Temperature Coefficient of Frequency	TC_f	--	-30	--	ppm/K

ⓘ CAUTION: Electrostatic Sensitive Device. Observe precautions for handling!

NOTE:

1. The frequency f_C is defined as the midpoint between the 3dB frequencies.
2. Unless noted otherwise, all measurements are made with the filter installed in the specified test fixture that is connected to a 50Ω test system with VSWR≤1.2:1.
3. Unless noted otherwise, specifications apply over the entire specified operating temperature range.
4. The specifications of this device are based on the test circuit shown above and subject to change or obsolescence without notice.

In line with our ongoing policy of product evolution and improvement, the above specification may subject to change without notice

ISO9001:2000 Registered

For quotations or further information please contact us at:

3 The Business Centre, Molly Millars Lane, Wokingham, Berkshire, RG41 2EY, UK

<http://www.actcrystals.com>